





# Find rural locations easily with a 3 word address

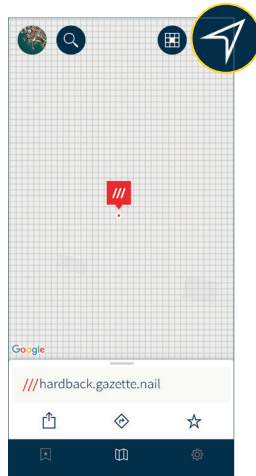
what3words has given every 3m square a 3 word address.  
To help someone find a rural location, give them a  
3 word address and they'll get there quickly and easily.



Download the free **what3words app**.

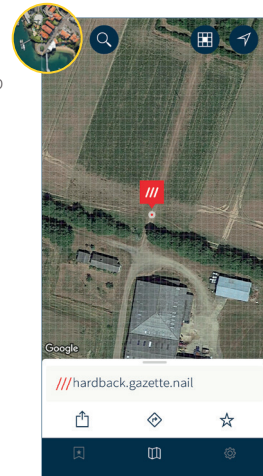
# Use the free what3words app to find a 3 word address, whether it's for a specific spot in a field, a barn, or the entrance to a farm.


1. Open the what3words app and tap  to see your current location, or tap  and enter a street address or place.

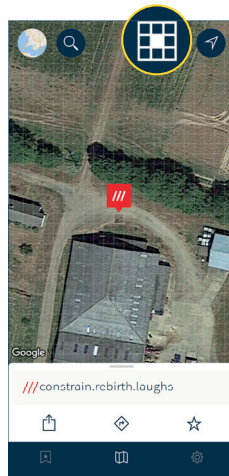


2. Switch to satellite\* mode and move the map to the location you're looking for.

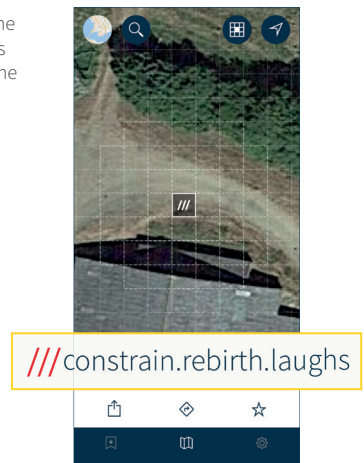
\*Satellite imagery may be out of date




3. Tap  and select the correct square.

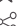



4. You'll see the 3 word address displayed on the screen.



You can also:

Tap  to save it.

Tap  to share it through a messaging app like WhatsApp.

Tap  to get directions there using the navigation apps on your phone.

If you have limited data connection, tap 'Compass' to navigate to a 3 word address.