

Llanfair Times

incorporating Lloyney News

June 2023

The next edition will be in November and every four months thereafter.

LT is free for all residents in Llanfair Waterdine (and Lloyney thanks to the Community Trust). For all others it will be £5 for 3 editions delivered locally, £10 for 3 editions posted.

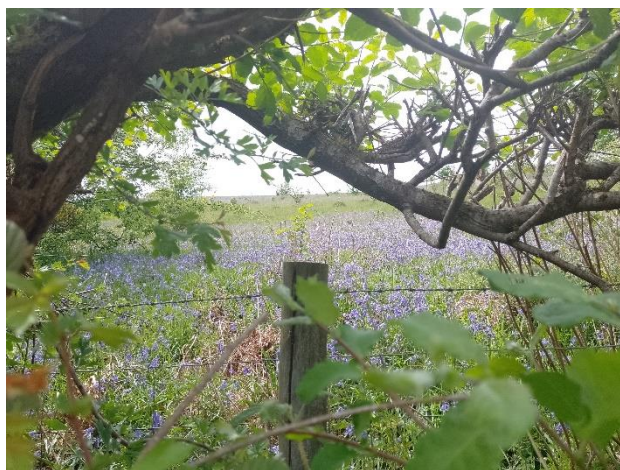
We would like to receive your articles, comments, ideas, points of view. The deadline for the next edition is 20th October 2023.

Please email us at llanfairtimes@gmail.com

Like all teams, here at LT we would love more folk to get involved and help with proof-reading, distribution, ideas for articles etc. If you would like to join us, please email us.

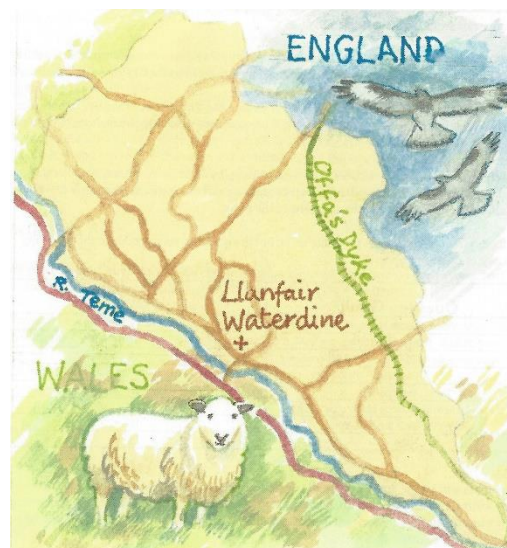
Happy reading.

Llanfair Times Editorial Team



Bluebells in Melin-y-Groque May 2023

Mark Hughes



Any views expressed in this newsletter are those of the author and not Llanfair Waterdine Parish Council or the Editorial Team.



Well, the Coronation weekend was packed with activity and Everest 70 was celebrated so this edition of the Llanfair Times is a bit later than usual to make sure we could accommodate reports on all that happened in the parish.....read on.

Everest Hall

The Coronation Bring and Buy Lunch held in Everest Hall on May 7th was a very happy event in spite of the weather. Lots of delicious food was consumed together with some rather potent punch! Many thanks to all who contributed by bringing food, helping with setting up, washing up, etc.

Special thanks to Felicity and Christine for so splendidly organising the event and to all those who helped to decorate the Hall and the whole village. All in all, the village once again rose to the occasion. Thank you.

Ruth Davies



Potent Punch...



Delicious food...



Robert Gwilt planted a Coronation Oak Tree...



..with a large crowd watching on.



....and always a raffle.



There was a live screening at the pavilion.



The Coronation Oak got protected.

EVEREST 70

Parishioners and friends of Llanfair Waterdine once again gathered to remember and celebrate the momentous event in 1953 when the then Col. John Hunt returned home after leading the first successful and, of course, British, ascent of Mount Everest on May 29th 1953, announced to the world on the eve of the Coronation of Queen Elizabeth II. How proud we were to welcome Col. Hunt home then and several people who were there in 1953 returned for the 70th Anniversary celebrations in Everest Hall, named in his honour.

There were displays of photos, newspaper footage and a short film to share their memories of that very special time with newcomers and the younger generation.



Guest of honour was Jennie Hunt, youngest daughter of Lord Hunt of Llanfair Waterdine, who brought along an oxygen cylinder used by her father during the ascent.



My plan materialised, as so many new and young residents, together with lots of old friends, turned up on Monday, catching up, viewing as much of the display as possible and eating the delicious cakes so very generously donated by many people. Thank you to everyone who attended, cooked and helped in so many ways to make the day very special.

Ruth Davies



My Memories of 70 Years Ago

The steam from our huge bath was swirling round the light from the single oil lamp. My younger sister, Sue, and I were sitting in the hot water talking. The house was very quiet. It was the night before the Coronation. Mum was downstairs, trying on her Victorian pantaloons for her production of 'The Llanvair Follies' the next day. She had been irritable all day because she'd had no news from Dad for some time and was concerned about the imminent arrival of the Monsoon.

Suddenly the phone rang. We stopped talking and listened. There was a gasp and squeak from Mum. I turned to my sister and said 'I think they've done it!' The next thing was a sound of footsteps pounding up the stairs and the door burst open. "They've done it, they've done it". Everest had been climbed. We danced round the bathroom laughing, naked and dripping. My father had achieved his great dream.

Mum started phoning round all her friends and in spite of the hour, it was 11.00pm by then, they all turned up with drinks; whiskey, cider, whatever they could lay their hands on. I remember Dai Davies kissing Mum through the kitchen window which rather shocked me!

The next morning we woke to find reporters in the garden and our quiet normal lives changed. The day went by in a blur. We watched the Coronation with Freddie and Mig Beavan at the Graig; they had a television! Before the Queen started her journey to Westminster Abbey a cheer went up along the mall as they announced that Everest had been climbed. "Her Crowning Glory".

So many friends, so many congratulations. Llanvair, as usual, had made the day special.

Celebrations continued over the next weeks and years, a wondrous welcome home for my father, with the villagers dragging him and my mother up the hill in a cart to Weir Cottage. We had endless opening of fêtes and awarding of fancy dress prizes. There was always 'a Hunt, Hillary and Tensing' of course. Dad wrote his book 'The Ascent of Everest' in Weir Cottage. I remember sacks full of letters arriving daily from around the world.

I know we all found living in the spotlight quite difficult, but it opened up many doors for my father and he went on to do great things.

Llanvair was our refuge where we could be ourselves, so when Dad was awarded a peerage, from where else would he have taken his title? Over the years Llanvair has continued to celebrate the first 'Ascent of Everest'. His Garter banner hangs in the church and Everest Hall is still standing. My father and his team members have now gone, faded into the history books and there are not many in Llanvair who remember that day, with the villagers skipping up and down to celebrate reaching the peak of the great mountain. But the story of that first historic ascent will, like all great adventures, still continue.

Sally Nesbitt (HUNT)

Hearing the News

While Dad was in Nepal with the team, making the attempt on Everest, we were living in Weir Cottage.

On the night of June 1st, Sally and I were in the bath, dimly lit by our small oil lamps. We had no electricity in the house in 1953, and relied on acetylene gas for our one light in the sitting room. And there was precious little heating,.. just an oil burner in the flagstoned hallway, so, it was cold in the house, even in late May. But we did have a telephone line. As we were about to climb out of the bath we heard the phone ring,... Shortly afterwards we heard a cry of excitement from Mum. She came running up the stairs, shouting "They've done it... they've done it". And at that moment, our lives were changed for ever.

The next morning, the day of the coronation, we woke to find the reporters from 'The Times' newspaper on our doorstep. Photos were taken, even one of the five of us and the cat, all sitting apparently watching the Coronation on the television. Unfortunately, we didn't have a television. But nevertheless, the reporter thought we ought to enter into the Coronation spirit and at least pretend that we were watching it! That evening friends from up and down the valley poured into the house for a huge party celebration. I remember very little of it, as I think I drank quite a lot of cider and found myself sitting under the dining room table!

Sadly, neither Sally nor I were at Weir Cottage when Knighton and Llanfair put on that magnificent 'Welcome Home' event, as we were both away at school. But the two younger sisters, Prue and Jennie, were there and may have some memories of that happy day, although they were only very small.

So now 70 years have passed and there are now no members of the original team alive. So much has happened. The world has changed in ways we could never have anticipated. Because of the legacy that that first ascent has left, through the lifelong public service work of my Dad in the service of young people, especially in the designing, planning and putting into action of the Duke of Edinburgh's Award Scheme,.....and through the continuing work of the Himalayan Trusts established by Edmund Hillary, bringing education and health to the Himalayan communities, that first ascent has remained to this day an inspiration for millions of people.

Sue Leyden

Reminiscences of the Successful Ascent of Everest 29 May 1953

I was only eight at the time and cannot remember much of the excitement leading up to the Expedition of the Ascent of Everest.

However, I do remember being woken up in what seemed like the middle of the night by someone outside shouting and banging the door. It was Fred Beavan of The Graig, who had called to tell us of the successful attempt and to get Dad out of bed to go with him around the whole parish to tell everyone the great news. They eventually arrived back home rather worse for wear having consumed sherry and goodness knows what else at every household!! I think they travelled around in Fred's Standard Vanguard car – no breathalisers then! This all happened during the night prior to The Coronation of Queen Elizabeth II. We were so proud to think that for a few hours we were the only people to know of the success, together with The Queen, until it was later announced to the world. Later that morning what seemed like hundreds of us squashed in the dining room at The Graig to watch The Coronation on a 12" TV screen – they had a generator; electricity did not reach our valley until Spring 1954.

It was over a month later that Col. John Hunt arrived home to our valley. He was greeted at Panpwnton, the easterly boundary of the parish, by crowds of people from the whole of the Teme valley, Knighton and beyond. The local men of our parish pulled him, with ropes attached, in a governess cart up the bank to his home at Weir Cottage.

The family was presented with a rich fruit cake, made by Mrs Dilys Williams of Lloyney House and iced by our Vicar, Rev. J.C. Williams. It had three peaks, the tallest being Everest. Ingredients for this cake had been donated by parishioners as a welcome home present.

The following day there was fun and games and fancy dress in the fields above and below the road near the school, followed by a BBQ and Reception outside the Red Lion Inn (now The Waterdine) with speeches, toasts and cheers. A four-engine Lincoln Bomber plane flew very low overhead three times, dipping its wings in salute and sending out red and blue flares.

All of these events are on display in the form of newspaper cuttings here today.

Two days of celebration of a feat known worldwide, which certainly put Llanfair Waterdine on the map and one of which we will always be immensely proud to have been part of. To this day the Hunt family has maintained its links with Llanfair Waterdine. Lord Hunt became a Knight of The Garter in St. George's Chapel, Windsor. Upon his death his banner depicting mountains and a Himalayan Bear was handed to his family, who, in turn, presented it to us at St. Mary's Church where it now proudly hangs, together with his Coat of Arms.

Lord Hunt was a very courageous, determined leader but also a gentle and humble man who did not entertain fuss and certainly never used the word 'Conquer' in the same breath as Everest.

But.....that is not the end of the story

Following the closure of Llanfair School in 1960 and after much discussion, it was decided to buy the building, for the huge sum of £200, given by five local residents in 1961 to be used as a Village Hall with Charity Status.

A collection was made around the parish raising some £800 towards building materials. Many local volunteers gave of their time and effort over the next seven years, resulting in our Village Hall being opened by the new Lord Hunt, Baron of Llanfair Waterdine, in June 1968. It was very aptly named 'Everest Hall' in his honour. Not, as many think, after Everest Double Glazing!!!!!!

The history of Everest Hall in its entirety, splendidly produced by Mary Bufton, our Treasurer and former Secretary, is on display here today.

Ruth Davies

Joce Williams

19th May 1930 – 20th February 2023



Joce was born at home in Lloyney in 1930, daughter to Fred and Lucy Jones and younger sister to Brenda. Fred was a carpenter/wheelwright who also sold petrol for a living at the family home, Underhill. It was a happy home in a special place, where friends and memories were made. This included walks up to the top of Lloyney Rock on a summer's day and attending Lloyney Methodist chapel three times on a Sunday, in a community where everyone knew everyone. Daily visits to see her grandparents at Bwlth Y Plain were commonplace.

Her first visit to Monaughty Poeth was as a very young girl, when, out playing with Bren and friend Mary Morris, they heard horses and wagons coming down the road. The Romany Gypsies were moving from village to village selling their goods and clothes pegs. Frightened for their lives, the girls ran down the lane

to the nearest farm, Monaughty, and hid amongst the milk churns until the gypsies had gone. Looking down the road Mrs Williams spotted the three frightened children, took them in and calmed them down with hot milk and a biscuit. Little did Joce know that, one day, Monaughty would become her home and that the kind lady who looked after them that day would become her mother-in-law.

Joce attended Llanfair Waterdine Primary School, moving on to Presteigne Grammar School, where she excelled at sport, making a name for herself in the school hockey team as a goalkeeper and with her long jump prowess on the athletics field.

In the war years life was different and Fred and Lucy took in evacuees from Kent and Liverpool, who are still in touch to this day, through Rita Robinson and Megan Gordon - another example of the community spirit spreading its net to help those who needed it most.

She moved on to Hereford Teacher Training College and then, once qualified, came back to teach at Knighton Primary School, alongside sister Bren. Joce was one of the founder members of Llanfair Waterdine YFC. They enjoyed such fun putting on drama productions and dances. She served as Secretary and Chairman. There was one memorable trip when the country clan from Llanfair headed to London for the YFC AGM, staying in the Regents Palace Hotel in Oxford Street, a far cry from the Teme Valley. They had such fun, the girls hiding in their room as John Morgan, ably assisted by the other boys, was caught red-handed leading a raid up the corridor armed with pillows and taking no prisoners!

Joce was part of the great excitement and celebration in 1953 when John Hunt conquered Everest. John and Joy Hunt lived at Weir Cottage in Llanfair parish when this momentous event was achieved, so apart from the Queen, who was celebrating her Coronation year, the good folk of Llanfair found out before the rest of the world.

In 1956 Joce and Jim were married; they had known each other most of their lives. They started a family in 1959 when Sal was born, followed by Simon and Kate. Joce returned to teaching in 1965, when she took up a post at Chapel Lawn Primary School, and would remain there for the next 20 years. She became a stalwart in keeping it from closure on many occasions and was part of the furniture until it closed, when she was head, in 1985.

Following her retirement, she wrote a children's book about Bobsy Bunny, a rabbit that interacted with the

birds, giving a wealth of information about nature and the local birds and their habits.

As their children left home, Jim and Joce, along with Bren and Pete and often Joan Adams from the Vedw, would venture away for holidays. Among the destinations were Egypt, Moscow, Italy, cruises and many more. Pictures would emerge of them all riding camels or pictured in Cossack gear!

Joce and Jim moved from their home at Brackenway down to the main farm, Monaughty Poeth, in 1982 and Joce became the perfect farmers wife, also doing Bed and Breakfast, belonging to the South Shropshire B & B group.

If you entered the kitchen you were always made welcome by Joce and often Maureen, who, along with Granville, helped Joce and Jim. Joce would often issue the warning, "There's only one rule here ... it's everyman for himself."

In the last few years, Joce saw the family grow, with Monaughty being the perfect place for them to visit. Joce adored her grandchildren, was immensely supportive and never missed a school play, village or Young Farmers pantomime.

Joce took a keen interest in everybody's lives, especially children, and had a wealth of knowledge. She loved seeing the many visitors and everyone was welcomed and wouldn't be able to leave without a coffee and a cake. So many of the local community have played their part latterly keeping an eye on Joce. She did so appreciate the many callers and once again that wonderful community spirit that Joce enjoyed all her life.

Joce will be greatly missed in the community, and by her family, but her memories are written down for posterity in a book she wrote with Bren, 'Llanfair Waterdine - A Parish Remembered'. She also, along with Anne Singleton, Mary Morgan and Joan Hobby, produced the book, 'Llanfair Waterdine and Lloyney – by the people who live there'.

Simon Williams

WHAT'S ON



The Everest Hall Committee would love to hear from anyone willing to take over from Don and Kath to look after the running of Flicks in the Sticks. This has become such an important and integral part of our village life that we want to see it continue if at all possible. If you are interested please contact Ruth at Teme Cottage or Don and Kath at The Mill, Lloyney, and they will fill you in with what is involved.

Many Thanks from the Flicks Team.

What's On at..... The Pavilion

Regular Classes

Monday - Yoga - 10:00 - 11:30
Tuesdays - Playgroup - 10:00 - 12:00
Wednesdays - Yoga - 18:30 - 20:00
Every other Thursday - Zumba - 17:40 - 18:20 (6-11yrs)
Every other Thursday - Zumba - 18:30 - 19:30 (Adults)
Fridays - Social - 19:00 - Close

What's On at..... The Everest Hall

Wine Tasting Suppers

- Monday 2nd October French Wines
- Monday 9th October Spanish Wines
- £15 a head each evening
- Contact Mark or Rita on 01547 510 341

Every second **Saturday of the Month** between the hours of 10.00am and 12.00pm: when you are going past the **Everest Hall** please **STOP** for a welcome break of tea or coffee and biscuits while you are catching up with friends and neighbours.

T Stop held at the Everest Hall every second Saturday of the month 10-12pm.

Catch up with friends and neighbours over drinks and biscuits. No charge, all are most welcome.

Contact Flik email : fizzywaters@outlook.com

Tel No 01547 529789

Mig's Group held at the Everest Hall every fortnight on a Tuesday.

Relaxed informal Music Group.

Contact Ceri Pearmain email:

ceripearmain@gmail.com Tel No 01547 529491

Everest Hall Llanfair Waterdine available for most events.

Hire charges start at £7.00 per three hour session approx.

Central heating, seating for 100, piano, projector, screen, hearing loop, bar with fridge, toilets inc. disabled, ample parking.

Also handheld and lapel microphones.

Much, much more.

Contact for further information : email

everesthall@btinternet.com

Bookings Ruth email: ruthtemecottage@gmail.com

Tel 01547 528592

or Mary email : marybufton@btinternet.com Tel

01547 510285

Mary Bufton

Community Trust Update

There have been many events over the last few months, mainly the coronation celebrations, but we have also held a fish and chips night to highlight a couple.

The coronation celebrations were attended well and Rob Gwilt planted an Oak Tree at the Pavilion to commemorate the occasion.

The fish and chips night was a success and it was great to see so many people attend.

Land Management

The ELS/HLS agreement has been going through some changes to allow this to be extended for 5 years. As one of the largest incomes for the LWCT it is essential that we have this finalised soon to allow us to manage the land parcels efficiently and in line with the agreement. This will ensure the income we receive is maintained to be utilised for the general benefit of the parish. We also will be starting the work on The Triangle so look forward to making positive improvements to the area.

Pavilion Committee

The committee has had some new members join and have many new events planned throughout the year. Please take a look at the notice board at the entrance to the Pavilion for all contact details and monthly calendar of events and activities going on.

We would like to thank everyone for their support and hope that the whole community continues to benefit from the facility. In an area where we are isolated, and with social clubs and pubs closing, we are thankful to have a place to meet and socialise. Here's to enjoying each other's company going forward.

Llanfair Waterdine Community Trustees

Matthew Croose, Steve Knowler, Will Rogers

Eating out...Castle Kitchen



The Mid-Wales borderland was a favourite holiday destination for the parents. They were always proud that their ancestors had come from Montgomeryshire (Llandinam) and Radnorshire (Bryngwyn and Clyro) on the Welsh side, while the English blood came from Shropshire (Cressage) and Herefordshire (Pembridge). Trips to hereabouts were an annual occasion. It was a relief when the Morris 1000, which could slither all over the place when we motored here off-peak (which we normally did) eventually conked and something slightly more sophisticated was acquired for the hill lanes we all know so well. There was a lot of "I remember when....." as we toured the byways and we invariably ended up in Montgomery or Trefaldwyn, that old 'town of Baldwin'.

Ah yes, Montgomery. There could be an overnight in The Dragon Hotel, slightly elevated and on the walking route to the castle. And the views from the top when you reach the castle – phew – extraordinary for people who lived in the home counties (forgive me, Chiltern and Cotswold Hills).

It is a great ride to Montgomery from here: takes about 45 minutes. It is picturesque, too: Purlogue; New Invention; Clun; Colebatch; Bishop's Castle and go on, on the B 4385, crossing the A 489 and you're almost there.



Montgomery remains a stunning little town: it is something in the manner of our local towns which is basically one main street and plenty going on. It is an ancient place: St Nicholas's church, a Grade 1 building, dates from 1220 and the town itself, which received a Royal Charter in 1227, is the former capital of Montgomeryshire. There is a wealth of Georgian, Victorian and even earlier architecture. There is also an impressive Town Hall; The Old Bell Museum and a highlight on a visit for many is Bunner's, to which people flock from far and wide. It is a shop which has been there since 1892 and is not unlike our own excellent and nearby Prince and Pugh. Have I sold Monty to you for a morning out?

As you turn into Broad Street, you see Castle Kitchen a little way along on your left. It is run by Alice. She formerly ran the café (and what a café it was) at the Oriel Davies in Newtown which, I believe, was opened and started due to the Miss Davieses, the late Lord Davies of Llandinam's sisters', generosity. Anyway, Alice moved on to take over Country Kitchen. Going there is a treat several times a year, not least in November, when Bunner's and also Alice's little shop / delicatessen itself have great gifts for Christmas.

On a visit the other day we began with coffee. This is an ethically sourced blend and comes from a small Herefordshire roastery. A big treat. A highlight of our visits, however, is Alice's homemade soup. On the day we were there it was pea, leek and watercress. With this we had one of Alice's warm herb and cheese scones which are spectacular. This was followed by Welsh Rarebit, made with mature cheddar, mustard and Monty's locally brewed beer. It comes with a salad and caramelised onion and tomato chutney. There are also toasted sandwiches, wraps, smoked mackerel pate, their own hummus and, of course, oven-baked potatoes with a variety of sides. In addition, there is home-made quiche, a mezze plate with a selection of dips, olives and hummus and I haven't even mentioned the mouth-watering cakes. I guess you get the picture: delicious, uncomplicated, home-made food, served behind the little shop / delicatessen in the front or in the pretty back yard, in the sun or shade depending on your preference.

This cafe is well worth a visit. Go on – and let this worthy journal know what you think of Castle Kitchen and beautiful Monty.

Castle Kitchen Broad Street Montgomery Powys
SY15 6PH 01686 668795

Open: Tues until Sat (inclusive) from 10.00 am until 3.00 pm.

The RRR Two

Eating in...

Sticky Toffee Pudding

Dorothy Symonds's cooking is well-known hereabouts. Here is one of her recipes for a delicious pudd. Thank you to Dorothy for sharing it.

- 150g / 6 oz chopped dates
- ½ pt water
- 1 level tsp bicarbonate of soda
- 50 g / 2 oz butter
- 140 g / 5 oz caster sugar
- 2 eggs
- 150 g / 6 oz self-raising flour
- ½ tsp extract of vanilla



Sauce

175 g / 7 oz brown sugar
6 tablespoons double cream
112 g / 4 ½ oz butter

Method

Pour ½ pt water over dates in a pan and bring to the boil. Add bicarbonate of soda. Set aside to cool a little. Cream butter and sugar. Add eggs and beat. Fold in flour, then add the dates with the liquid. Pour into an 8 inch square ovenproof dish (lightly greased). Bake at 180 C for 30 – 40 minutes or until centre of pudding springs back when lightly pressed

Sauce

Mix sugar, cream and butter in pan. Bring to boil, then simmer gently for 3 minutes.

Pour a little sauce over the pudding and serve the rest separately.

Dorothy Symonds

The Butty Van

On the morning of Wednesday 24th May the 'Butty Van' set up in a building at the Graig and during the next two hours over 50 members of the farming community arrived to have their bait. Tea and coffee and bacon and sausage baps were provided free of charge by the helpers, while neighbours caught up on the latest news.

It was a great chance to meet up for a brief social on a working farm and in working clothes! Every age-group was represented with some people coming on their own and others calling by neighbours to share lifts.

Farmers came on quad bikes, trucks, and tractors! Two local farming businesses brought their full workforce!

The 'Butty Van' Initiative was originally set up in the Much Wenlock/Church Stretton area of Shropshire in 2017 and is an offshoot of the Borderlands Rural Chaplaincy, with the aim of supporting the rural community. The one in our area started in November 2022. 'Butty Van' mornings are held monthly on different farms and are open to all members of the farming community, their families and friends, as a time to catch up, share news and potentially support each other. Look out for the next one!

If you would like to host your own 'Butty Van' morning then please contact :

Janet Tudor 01547 520293

jetstream4000@gmail.com

You don't have to do anything except open the door of the barn, shed or building – the 'Butty Van' helpers bring everything they need and take everything away afterwards. Without venues the events cannot take place!

Deirdre Beavan

*****;

Llanfair Waterdine WI



There is a lot going on with Llanfair Waterdine WI at the moment. We have welcomed two new members and are working with local Institutes to share speakers and activities which broadens the variety of activities which we can enjoy. It all means that we meet the other area members more frequently. We were pleased to be invited by Stowe and Stanage WI to join them for an afternoon making enamelled jewellery and came away with some pretty items.

By the time that this issue comes out the members who have worked hard with craft, cookery and displays for the Powys Federation Open Day will have

done their 'bit' and will hopefully be celebrating some excellent results.

We had a wonderful question-and-answer session in April when our local resident Di Cook talked about her life as a police dog handler. Members were very interested in the training and care of the dogs and her close relationship with them and there were lots of anecdotes from both her and Andrea's lives in the Force. She allowed us to open the meeting to local residents and we had several guests.

In May our talk was "Magic with Mark" a local amateur magician. We were amazed with his sleight of hand when he performed tricks with members looking really closely in small groups. He challenged us with some puzzles and a couple of members solved one!

On 2nd June Stephen Hollinghurst is presenting an evening of comic verse. He is always entertaining and does professional presentations. Following that, on 7th July, there will be a demonstration by a fibre artist, Lynn Kinsey, and in August we hope to go to the Pavilion to play Boules. Watch out everyone; the WI is on the way!! September brings Christine and Steve Chainey with "Jive". I am not sure how active we will be expected to be but "bring it on".

If you would like to join us for an evening to enjoy the speaker and share a finger supper we meet in the Everest Hall. Meeting 7pm and speaker 7.30pm. on the first Friday of the month. We are always glad to welcome visitors.

For further information contact Ann Harroway 01547 528477.

Ann Harroway

Addendum from Judith, Llanfair Waterdine WI

Well, the excitement and suspense of the 2023 WI County Show has now passed.

It's a Marmite sort of event and it may not appeal to every WI member but if it's for you then it's the chance to excel at something new or old, to take on a new challenge and of course socially to meet up with friends from across the Powys-Radnor Federation.

Having said that, if you are competing you need a broad back to accept some of the judges' comments,

not always to your liking, made about your valiant first effort, whether it's the size of your mini Battenburg Cakes(measured with a ruler), the texture of your jam, choice of colours in your floral display or some loose ends of thread unbeknowningly still dangling. The standards are very high and the judges' decision is final.

We had some wonderful entries this year: there was enthusiasm and collaboration especially by new members, new skills and advice given by more seasoned members and much laughter along the way. We entered almost every category, had many successes and had a wonderful afternoon looking at the displays from other WIs. The Community Hall in Knighton looked splendid.



And dare I say it, I did hear on the grapevine that plans are already afoot for our entry to next year's show.

Judith Tollman

Tesni Beavan



Tesni's achievement of winning best soloist in Radnorshire with Teme Valley YFC in February. She was 17 at the time and won best vocalist for the whole of Radnorshire Young Farmers. Tesni is in Teme Valley Young Farmers .

St. Mary's Church



An 'Inclusive Church'



'Grass Cutting' Coffee Mornings – All welcome

All at 11.00 am on the first Wednesday of the month.
June 7th - At Birches Gate, the home of Margaret and Leon Drewnicki
July 5th - At Coed-yr-Hendre, the home of James and Kathy Thomas
August 2nd – At Ladycoft, the home of Andrea Evans and Di Cook
September 6th - At Lloyney Lodge, the home of Brian and Louise Minniss
October 4th - At Everest Hall, hosted by Sandra Thomas.

Reflection and Compline Services.

The next 'Reflection' Services will be at 6.00 pm on Wednesdays 14th June, 9th August and 11th October.
The next 'Compline' Services will be on Wednesdays, July 12th and September 13th, at the same time.

Quinquennial Inspection

Our church is fully inspected every five years; a report is written and various work needing to be done is prioritised. The report covers the condition of the church inside and outside and the churchyard,

including the safety of the graves and gravestones. The inspection will take place on July 11th. Before that, the PCC would like to tidy up the churchyard and are proposing a general gathering at 6.00pm on Friday 26th June. If you feel able to help for a couple of hours please let Robert or Graham know. Thank you.

Local Residents Remembered

Ruth Davies writes: It has been a very sad time in and around Llanfair Waterdine on the passing of several members of our community.

Joce Williams

Jocelyn (Joce) Williams of Monaughty Poeth sadly passed away in Hereford Hospital and will be missed so much in our valley where she had lived all of her life. As a child she was brought up at Underhill in Lloyney by her parents Fred and Lucy Jones, together with her sister, Brenda. She was very much involved in local life in both Lloyney and Llanfair, at The Lloyney Methodist Chapel, with the Llanfair Young Farmers' Club, The Llanfair Follies (an entertainment group) and much more. Joce moved to Brackenway, Skyborry after her marriage to Jim, where they lived for many years, bringing up their family, Simon, Sally and Kate and eventually moving to Jim's home, Monaughty Poeth. Joce was a primary schoolteacher firstly at Knighton and then at Chapel Lawn from where she retired. She was very highly thought of by all her pupils who remember her fondly. There was always a welcome at Monaughty to all callers, with a cup of coffee, piece of cake and a chat. She was a fount of knowledge about all local people and events over her lifetime. She will be much missed by us all, especially those who have known her for all of our lives. Our sincere sympathies go to Jim and all her family.

John Boast

Phillippa has written about John below. Our sincere sympathies go to Philippa and all the family.

Phillippa Boast writes: Our thanksgiving service for the life of John, held at St Mary's Church on 26th April, recalled with love his 93 years of life. He was born and grew up in Sheffield during times of depression and war. John followed three generations of his family into the steel industry and gained a degree in metallurgy. After the interruption of National Service in R.E.M.E, he worked as advisory metallurgist and salesman in Yorkshire and abroad, retiring in 1984, when we moved to Llanfair Waterdine. Outside of work, John involved himself in sport, politics, youth work and civic improvements. He always enjoyed action. Whether it be climbing,

walking, sailing or building Graig Cottage, he challenged himself with vigour and determination. Retirement gave adventure into new and beautiful country and opportunity to enjoy Llanfair with its shop, post office, church and Red Lion pub, where he found friends and thrived on discussion and provoking political argument. How often he happily recalled those days!

The experience and knowledge he had gathered during his long life caused John to view the digital world, in which we are now enmeshed, with suspicion. He remained firmly loyal to more tried and tested ways of being, was always ready to offer advice and help to his family and friends, and to enjoy lively discussion over a bottle of wine.

Idris Lloyd

Idris, of Greenlands, Lloyney, husband of Maggie, died peacefully recently after a long battle with his diabetes. He was a local man, living in Dutlas before his marriage. You may remember reading his most interesting articles in The Beacon Magazine, about his life and experiences growing up and of the many characters he encountered along the way. We extend our sympathies to Maggie and his family in their loss.

We also report the recent passing of Margery Hewins (nee Moorman) formerly of Lower Goitre and Joan Walton (nee Evans) formerly of Lloyney Shop. Both were well known to those of us who have lived here all of our lives.

May Day Coffee Morning 2023

Rob Taylor writes: Our thanks to all who helped or turned out for this event. They enjoyed well-stocked stalls. There were lots of very tempting cakes, a variety of 'bring and buy' items and books and plants, preserves and chutney aplenty, plus, of course, the raffle. As well as spending money, coffee, tea and biscuits were served and Everest Hall was buzzing with friendly conversation. When all was added up the event raised a welcome £554.71 for church funds.

So, once again, thanks to all who served coffee, tea and biscuits, organised and ran the stalls, and helped in any way.

Parish Giving

Over 30 people now make regular payments to the Parish Giving Scheme. Information and application forms are available in the church porch. Please contact me if you would like any further information. A new facet of the scheme is that by clicking on a QR code with your 'i phone' you can make a 'one-off' or regular donation. There will be an A4 size QR code in the church. As our church does not have access to the

internet, there are also bookmarks in the church with the QR code on the top, which visitors to the church can take away and access later.

Church Stalls

The Church Stall, next to Gail and Steve's garage, (by kind permission of them), and the Church Porch Book Stall are doing well. Thanks to all those who have contributed and purchased, items. The great news is that the total raised since the stalls opened last summer is a good way over £1,000.

Please put donated items on the stall, priced if possible, and books, including children's books, in the church porch. (There is a notice there indicating the price of books which is £2.00 for hardbacks and £1.00 for paperbacks.)

Coronation Weekend

Our weekend of events to celebrate the Coronation had been carefully thought out and drawn up by all the associations in the village to ensure that events were available to all interested parishioners. The Coronation Service was shown on the Pavilion 'Big-Screen'; the Coronation lunch was very well supported in Everest Hall, following on from a Royal Celebratory Morning Service in St Mary's Church, which contained some readings and music from the Coronation Service, and the Coronation poem written by Poet Laureate, Simon Armitage.

The weekend was commemorated by the planting of an oak tree in the Pavilion field by Robert Gwilt.

Cathedral Visits

Before the June edition of this magazine, Llanfair Singers will have led Choral Evensong in Hereford Cathedral on 20th May. After a highly enjoyable visit to sing at Chester Cathedral plus Coronation Services at St Mary's Church, Bucknell and St Edward's Church, Knighton, (where the choir sang 'Zadok the Priest'), the Singers are looking forward to visiting our local Cathedral, where they sang their first Choral service 10 years ago.

Graham Trew

Rev'd Martin writes

Easter is passing and soon we enter the season of Ordinary Time in the lectionary. It is otherwise known as Trinity, and represents a time of growth and development: life in its fullest capacity. Gardens play a

part in Biblical writing. There are also frequent references to growth in parables and teaching about life and how to get most from our time. The Easter story begins in a garden, where Jesus's body had been buried. The risen Christ was initially mistaken for a gardener. In the Old Testament, life begins in a garden. In the Song of Songs, the metaphor of the garden is used for the consummation of love and for life lived through and by love. The life of the nation and people of Israel is sometimes referred to as the metaphor of a vineyard, and a deserted vineyard which has become overgrown is a symbol for a society without order.

This is of course 'peak garden' time. The work of the previous autumn, winter and spring is now literally coming through as new growth, life and fruition. As we all know, if we are to enjoy a garden, a garden needs to be planned, created and maintained. There is a reciprocal arrangement with nature. Put the time and trouble in, and the benefit is available.

One of my favourite gardens is the lost garden of Heligan. This was an extravagant and luscious garden which is now close to the rather larger and more visited Eden Project. Intriguingly, Tim Schmitt was behind both projects. Each had its own ideas and reasons for being, but they are very different in appeal and approach. To my mind, there was more authenticity to the Lost Gardens of Heligan. And the result to my eye was all the more special. The notion that something which was lost, has now been re-found and recreated is the more exciting and satisfying project. The Eden Project is spectacular, but is something which has been created in a gorge, and brings plants to life which are impossible to grow without the bio-domes. In the Heligan garden, we find something which lives again, and thrives after years of dereliction and neglect. The slightly amusing part for me is that we saw the Eden project in bright sunshine, and the Lost Gardens of Heligan a day later in torrential rain. I haven't worked out if there is a metaphor in that.

Your friend, Martin. *Martin Quayle*

Answers to last edition's quiz; 1 Gail and Steve Knowler won the Boules Cup 2022.2 Julie Bevan.3 The Graig Scrambles.4 True.5 1962.6 Adrian Bailey.7 Robbie Hodnett.8 True.9 Border Park..10 Robert Weale

LLANFAIR SINGERS CHAIRMAN'S DIARY

The last three months have gone by in a whirlwind of activity, learning three psalms and four anthems in six weeks.

The starting point was our trip to Chester Cathedral, which was another wonderful experience and one that everyone can share in since Chester live stream all their services on Youtube. If you haven't seen it yet then here is the link: <https://www.youtube.com/live/Ocy4eVnk87o?feature=share> You might want to skip through the psalm (which was rather a long one) and go straight to the Magnificat and Nunc Dimittis – and definitely the fabulous anthem “*Ye choirs of new Jerusalem*”. We do do Cathedrals rather well, which is probably why we are always invited back. – which makes this a justified boast!

No sooner had we returned than we were learning the next anthem in readiness for a pre-coronation service in Bucknell and then, for the post-coronation evensong at St. Edward's in Knighton, yet another anthem (Zadok the priest – as heard at the coronation) and a 12 part psalm arranged specifically for the choir by one of our Musical Directors, Richard Lewis.

I hope that you are keeping up with all this, because as soon as those services were over we had to prepare for evensong at Hereford Cathedral. Another psalm to learn and some serious revising (re-learning?) of the beautiful anthem “*The Evening Hymn*” by Balfour Gardiner.



After all that we had earned ourselves a week off!

On 1st June we shall begin to learn all the music that we need for the coming year. Starting with some light music for the Christmas concert along with preparing for our biennial

trip to Sudbury, at the end of June 2024, for our joint concert with the Stour Valley Singers. I feel sure that there will be Christmas services to prepare for, more Cathedral evensongs in the offing but, for the moment, we're taking things easy and looking forward to the choir party on 2nd July – this time it will be held in Chapel Lawn, so no need for panic in Llanfair!

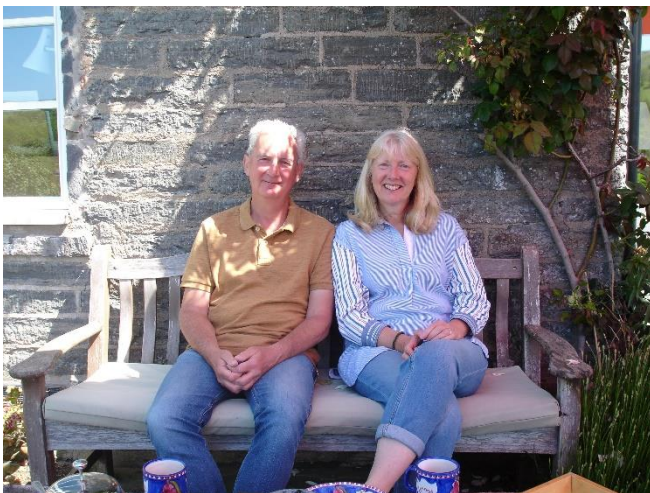
To those of you who will have been kind enough to look at the Youtube video, you will notice the challenge that we have: whenever the Psalms are sung: the verses are sung by alternate sides. With only two tenors on each side we only need for one of them to be ill and we are in trouble. **Your choir needs you, particularly if you are a tenor!** Don't be shy – this is the ideal moment to join us as we begin to learn a completely new set of music..... and you will be joining just in time to enjoy a Llanfair Singers' party – and, as everyone knows, we do parties VERY well! Contact, Graham, Richard, or me if interested.

Have a wonderful summer – if the weather stays like it did last week no-one will need to go abroad!

Michael Symonds

In Conversation with.....

Michele and Ray Woodhams



Michele and Ray live at Llanftroft towards the north of the parish and have been there permanently since May 2022. However, in this time they have had several enjoyable holidays abroad, including in New Zealand during the winter months here. Michele and Ray say that the time here has gone quickly and that they have had a very warm welcome.

RL: How did you come to move here from your previous home in Sussex?

RW: We had been looking for about six years. We had started to search on-line. We are enthusiastic walkers and Shropshire and Herefordshire are great counties for walking. We also know Yorkshire and the Lake District but they are too busy! We came here to view two houses, one which we now own and one the other side of Ludlow. We went for Llantroft.

RL: What did you like about it here?

MW: The location!

RW: Retirement was a time for a five-year project and we have now immersed ourselves in the house and garden. We have learned some new skills, too. Michele has been 'pointing' and 're-pointing' and I have re-slatted the stable roof and installed new doors and windows. Learning new skills has been exciting!

RL: What about the house?

RW: It was built in about 1780 and so is really old. The history, character, peace and quiet and the silence are wonderful.

MW: The girls were not always happy with isolated holiday cottages in their younger years but they love it here!

RL: How many children do you have?

MW: Two daughters, Emily and Kate. Emily is a chartered surveyor and still lives in Sussex and Kate is doing a nursing degree at Cardiff University. Emily is in what is predominantly still a man's world. However, she won a 'Women In Industry' award while studying at university.

RL: That's really great! What did you both do?

MW: I was initially in administration and then trained to be a nurse followed by doing a degree in public health nursing. Ray was a chartered surveyor so our daughters have both followed in our respective footsteps.

RL: Do you have any pets?

MW: Our springer spaniel died just before we came here. A great shame as she would have loved it here.

RL: Where do you both originally come from?

RW: We were both born and bred in Sussex, in different towns which were next to each other. Hayward's Heath, where we lived, was becoming more like a commuter town by the day. One of our daughters is still there.

RL: Have you two been together long?

MW: 35 years plus!

RL: How did you meet?

MW: My best friend became engaged to a good friend of Ray. We met at their engagement party!

RL: What do you both like most about Llanfair parish?

MW: The good sense of community, which we hadn't experienced before. We are going to Everest Hall on Monday (30 May) to see the film for the 70th anniversary of the ascent of Everest. While in New Zealand we visited the Sir Edmund Hilary exhibition when staying in the Hermitage Hotel in Mount Cook village where the ascent team members, including Lord Hunt, trained.

RL: What are your hobbies?

RW: Our present hobby is the 'Five Year Plan' of renovating our house – 'The Project'! Otherwise, travel is something we love. We are both used to a multi-cultural society and like to see other ways of life around the world. 30 years ago we went off with a back-pack and went round the world. So the plan for the next five years is to travel and do up the house. We have just come back from a holiday in the Yorkshire Dales, which was really good and involved lots of walking. I wouldn't have given up work completely if it hadn't have been for 'The Project'!

RL: Any future travel and holiday plans?

RW: Kate will be home from university soon and we are going to do a tour of Morocco with her in her holiday. Next winter we might go somewhere exciting and a long way away while we are still able to travel!

RL: It all sounds a lovely blend of home improvement and exploring new horizons. Thank you for coming for coffee and for agreeing to talk for Llanfair Times. It is, and will be, very much appreciated.

Richard Lewis



Rob Gwilt just can't stop quizzing us....

Coronation 2 Coronation

- 1 .. How old was Elizabeth when she was crowned Queen in 1953 ?
- 2 .. Who won a famous FA Cup Final in 1953 ?
- 3 .. How many times has Great Britain won The Eurovision Contest ?
- 4 ..When was Prince William born ?
- 5 ..Princess Anne was once Sports Personality Of The Year .. True or False ?
- 6 ..King Charles was once an accomplished sportsman. In which sport ?
a Darts
b Polo
c Wrestling
- 7 ..How many FA Cup Finals has Queen Elizabeth attended ?
- 8 ..When was Prince Charles made Prince of Wales and where ?
- 9 ..Who won a famous FA Cup Final in 1973 ?
- 10 Zara Phillips was once Sports Personality Of The Year .. True or False ?
- 11 Name the racehorse, owned by Queen Elizabeth The Queen Mother, who famously and sadly fell on the final straight while leading the Grand National in 1956 ?
- 12 Who captained England to World Cup glory in 1966?
- 13 In 2012 Queen Elizabeth appeared alongside James Bond in a short film. Who played James Bond ?
- 14 When was Prince Harry born ?
- 15 What happened on 25 November 1953 , in London, that made shocking world wide headlines ?
- 16 Which year did Prince Charles and Camilla get married. And where ?
- 17 Prince Charles attended Aberystwyth University . True or False?
- 18 Only on one occasion has all four home nations qualified for the World Cup In what year ? and where ?
- 19 Name the Royal Family member who played for England when they won the Rugby World Cup in 2003.
- 20 Which Bear did Queen Elizabeth appear alongside in a short film in 2022. And what was revealed in her handbag?
- 21 And one bonus question ,which will surprise some . What football team does King Charles support ?!

Robert Gwilt

Report following Annual Parish Meeting Monday 15 May 2023

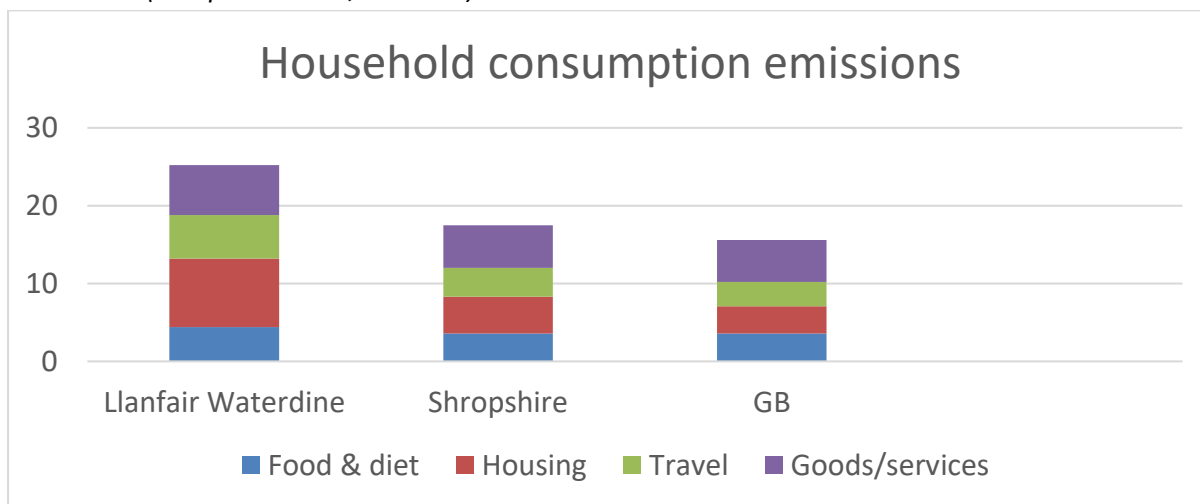
Nick Read, Project Co-ordinator with South Shropshire Climate Action, was thanked for a most interesting presentation “How can a small, rural community, address climate change?” at the Annual Parish Meeting on 15 May 2023. Statistics specific to Llanfair Waterdine Parish were provided.

Consumption Footprint

- This shows the emissions produced as a result of what people within your parish, ward or council area use in their daily lives. This includes the obvious things like gas, electricity and petrol, but also products like food and drink, clothes, shoes, consumer electronics and appliances, as well as financial services, even where these emissions take place outside of the local area.
- This is a measure of behavioural carbon emissions (t CO₂e pa/per household)
- Food and drink 4.4t Travel 5.6t
- Housing 8.8t Consumption of goods/services 6.4t

Household Consumption emissions

25.2t CO₂e (Shropshire 17.5t, GB 15.6t)



Territorial Emissions

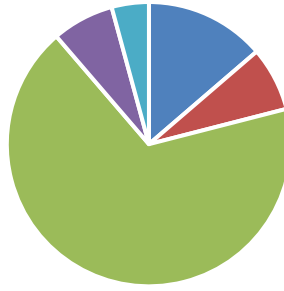
This shows the emissions produced within the territorial boundaries of your parish, ward or council area, and is based on what happens in that space. So this includes emissions from the presence of roads or other transport systems, or local agriculture and manufacturing, whether or not local people were travelling on that road or use those products and services.

- Agriculture 7759t
of which 1.001t is fuel
- Housing 837t
- Road transport 1570t
- Industry and commerce (exc agriculture) 809t
- Other transport 485t

Llanfair Waterdine: Territorial Emissions

12,096 t CO₂e p.a.

Emissions



■ Road transport ■ Housing ■ Agriculture ■ Industry ■ Other transport ■ Waste

What are the options?

Simple steps can be effective

- *Clothes swap*
- *Repair café*
- *Retrofit roadshow*
- *Car clubs*
- *Love food hate waste*
- *Nature Recovery Networks – Local Nature Recovery Strategy*
- *Regenerative/agro-ecological production methods*
- *Ancient Woodland Restoration Project*
- *Trees Outside Woodland Scheme*
- *Peat management*
- *Hedgerows and road verges (RSVP – Restoring Shropshire’s Verges Project)*
- *NB Agriculture is crucial to zero carbon*

You are invited to join the South Shropshire Climate Action

Email Nick and Fiona: SSCA@mea.org.uk

Sign up to our newsletter via our website: www.southshropshireclimateaction.org.uk

Or Follow:



@SouthShropshireCA



@ShropClimate



@southshropshireclimateaction

Please contact the Clerk if you would like to receive slides from the presentation by email.

DIRECTORY

Regular Events Round-About

When		What	Where	Contact	
Ev. Mon	10.00 am	Yoga	Pavilion	Kat 07968 819 123	
Ev. Tues & Fri 10.00 am		K'ton Food Bank	K'ton Bapt Ch	Helen Anderson 07731524058	
Ev. Tues	10.00 am	Llanfair Little Ones	Pavilion	llanfairlittleones@gmail.com	
Ev. Weds	6.00 pm	Yoga	Pavilion	Kat 07968 819 123	
Ev. Thurs	9.30 am	Leg Club	K'ton Comm	Dist. Nurses /	521270
				Jo Davies	520367
Ev. Thurs	7.30 pm	Llanfair Singers	Everest Hall	Annie Pearson	520734
Ev. Fri	7.00 pm	Social	Pavilion	llanfairpavilionbookings@gmail.com	
Ev. Sun	3.00 pm	Walking Football	Community Field	Flick Waters	529789
1 st Fri	7.30 pm	Women's Institute	Everest Hall	Ann Harroway	528477
2 nd Mon	7.30 pm	T. Valley G'ners' Cl	Knucklas Comm	Margaret Clugston	529155
2 nd & 4 th Tues 1.30 pm		K'las & D'ric't			
2 nd Sat	10.00 am	Craft Grp	Knucklas Comm	Margaret Clugston	529155
		Tea Stop	Everest Hall	Flick Waters	529789
Monthly Sat	7.30 pm	Flicks in the Sticks	Everest Hall	Kath & Don Szmids	528842
4 th Sun		K'ton and District			
(not summer months nor Dec)		Concert Society	St Ed's Hall K'ton	Becky Sherman	530530
Varies	7.30 pm	Mig's Band	Everest Hall	Ceri Pearmain	529491
Varies		K'ton and D'ric't			
Varies		Refugee Supp't Grp	K'ton Bapt Ch	Lawrie Stevens	529989
		K'ton YFC	Everest Hall	David Morgan	520033

Llanfair Times inc Lloyney News is produced by an Editorial Team on behalf of Llanfair Waterdine Parish Council. The Editorial Team comprises: Mark Hughes, Darren Knipe, Gail Knowler, Andrew Lewis, Richard Lewis, Jane Thomas, Sandra Thomas and Graham Trew.